

Power + 8-35V DC

OUT0 OUT1 OUT2 OUT3 OUT4 OUT5 OUT6 OUT7

SK1 SK2 SK3 SK4 SK5 SK6 SK7 SK8 SK9 SK10 SK11 SK12 SK13 SK14 SK15 SK16

RL1 RL2 RL3 RL4 RL5 RL6 RL7 RL8

Max. AC 230V 3A

F.W. V

(C) HCNC 2009

J1

RS232C

J2

J3

MBIO MODBUS I/O Controller

www.quantumserver.com

MBIO V1.0

OUTPUT

INPUT

MODBUS SLAVE Device

CNC Elektronika

PWM

ANALOGUE

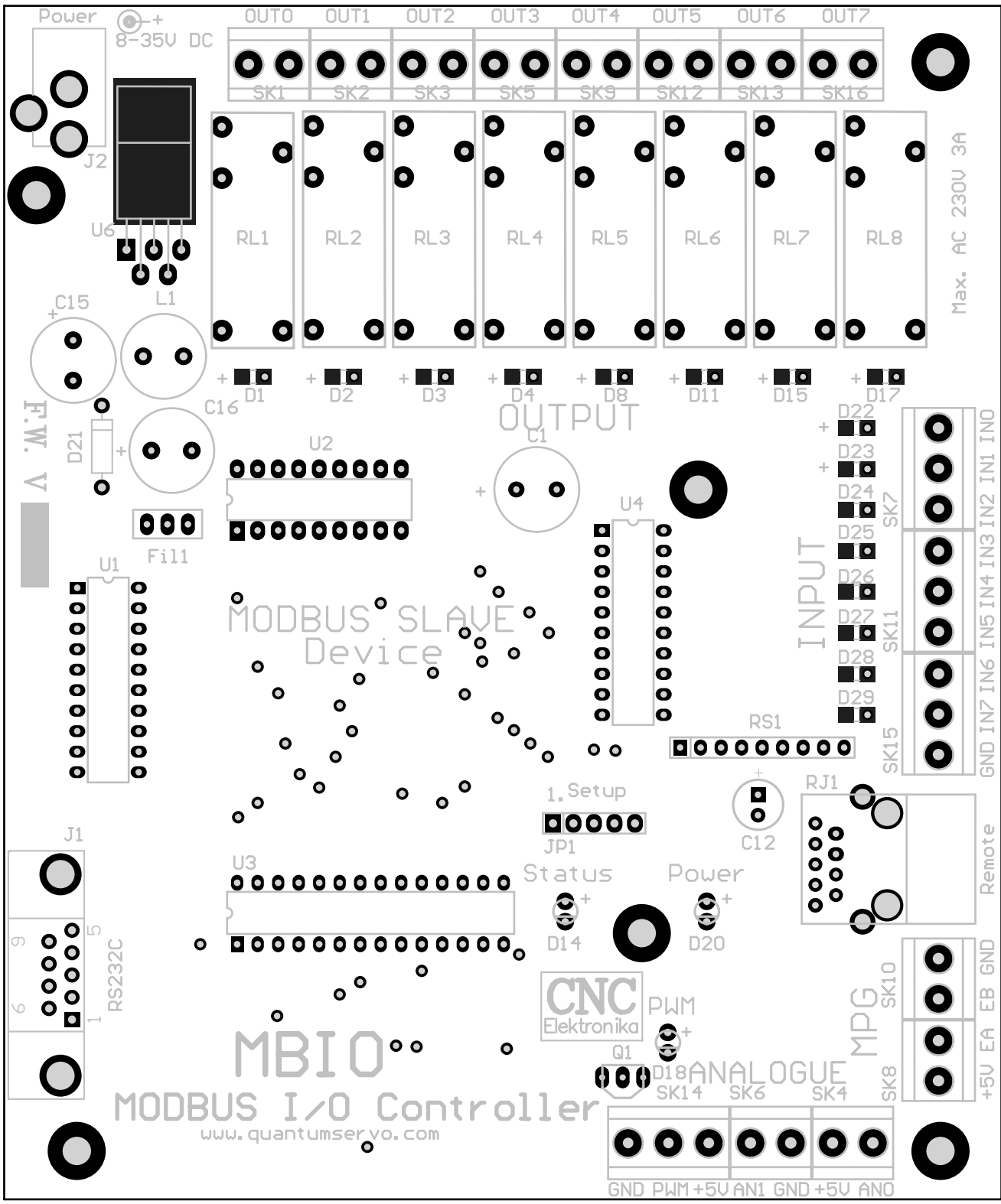
SK14 SK15 SK16

GND PWM +5V AN1 GND +5V AN0

GND IN7 IN6 IN5 IN4 IN3 IN2 IN1 IN0

Remote

+5V EA EB GND



MBIO
MODBUS I/O Controller
www.quantumser.vo.com

CNC
Elektronika

OUT0 OUT1 OUT2 OUT3 OUT4 OUT5 OUT6 OUT7
SK1 SK2 SK3 SK5 SK9 SK12 SK13 SK16

RL1 RL2 RL3 RL4 RL5 RL6 RL7 RL8

Max. AC 230V 3A

OUTPUT

INPUT

MODBUS SLAVE
Device

IN1 IN2 IN3 IN4 IN5 IN6 IN7 GND

Remote

+5V EA EB GND

GND PWM +5V AN1 GND +5V ANO

Power 8-35V DC

J1 RS232C

1. Setup JP1

Status D14

Power D20

PWM Q1

ANALOGUE SK14 SK6 SK4

MPG SK8 SK10

C12

RJ1

RS1

D22 D23 D24 D25 D26 D27 D28 D29

D1 D2 D3 D4 D8 D11 D15 D17

C15

L1

D21

Fil1

U1

U2

C1

U4

U6

J2

